

APPENDIX D

FINDING CHARTS OF SXTS

“...my God, it's full of stars!”
(Clarke 1968)

The figures reported in the following pages show the fields of the 28 SXTs listed in Ch. 8 and, if known, the position of their optical counterpart. These finding charts are listed in order of increasing right ascension. In 24 cases, the images were extracted from the *Palomar Digitalized Sky Survey I* and the reference photometric bands of the fields are *B* for the southern hemisphere objects and *R* for those belonging to the northern hemisphere. The limiting magnitude is ~ 20.5 for both filters. Concerning the objects SXT V2107 Oph, GRS 1739-278, EXO 1846-031 and QZ Vul (see captions of the corresponding figures), different images from the Palomar digitized plates were used as the object is either not easily recognizable (as in the cases of V2107 Oph, GRS 1739-278 and QZ Vul) or because the field is practically empty (the case of EXO 1846-031).

If not otherwise indicated, the field size represented in the figures is $3' \times 3'$ if the optical counterpart is known, while for SXTs with no optical counterpart the displayed field is $5' \times 5'$ and an error circle with radius $1'$ is indicated. In all figures North is at top and East is to the left.

REFERENCES OF APPENDIX D

- Marti J., Mirabel F., Duc P.-A., Rodriguez L.F., 1997, *A&A*, 323, 158
- Martin A.C., Casares J., Charles P.A., van der Hooft F., van Paradijs J., 1995, *MNRAS*, 274, L46
- Parmar A.N., Angelini L., Roche P., White N.E., 1993, *A&A*, 279, 179

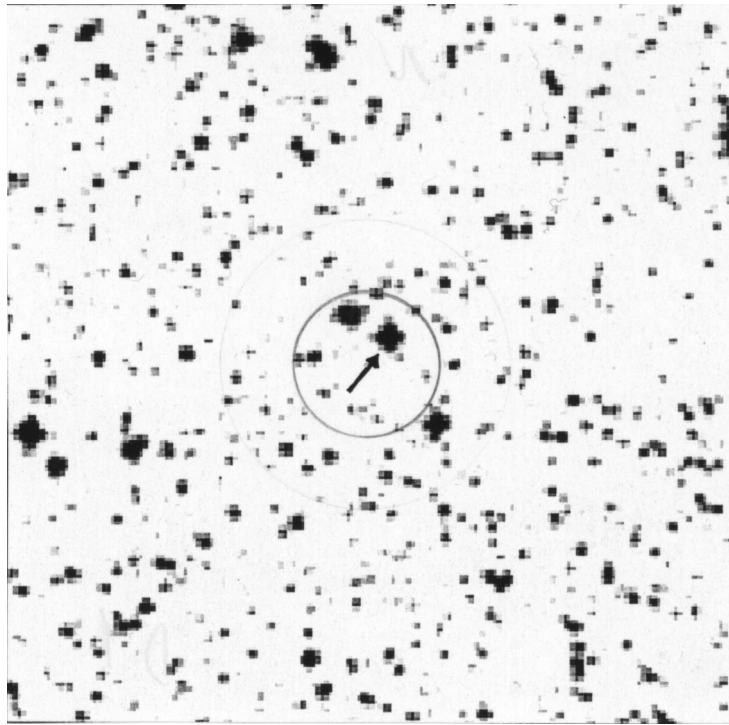


Fig. D.1. Field of XN SMC 1992. The likely optical counterpart is indicated by the arrow.

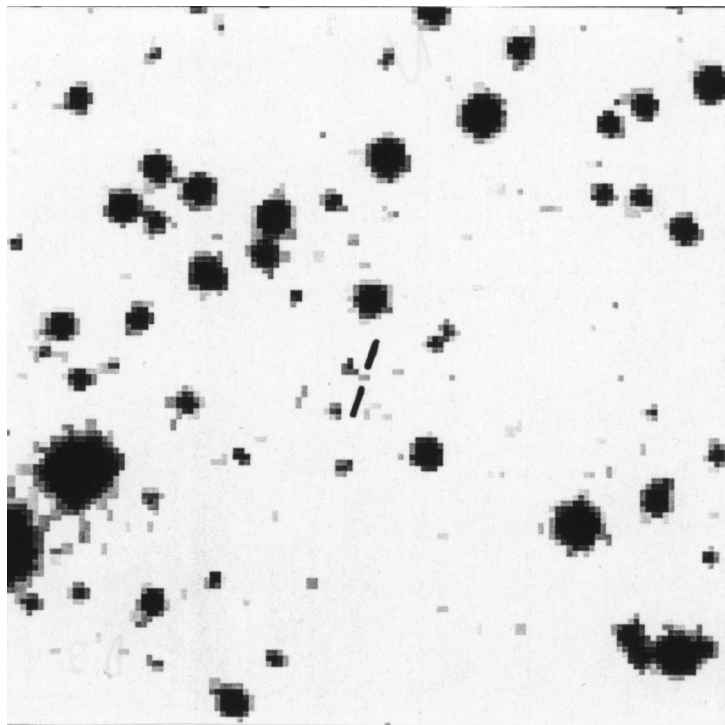


Fig. D.2. Field of V518 Per. The object is indicated by the dashes.

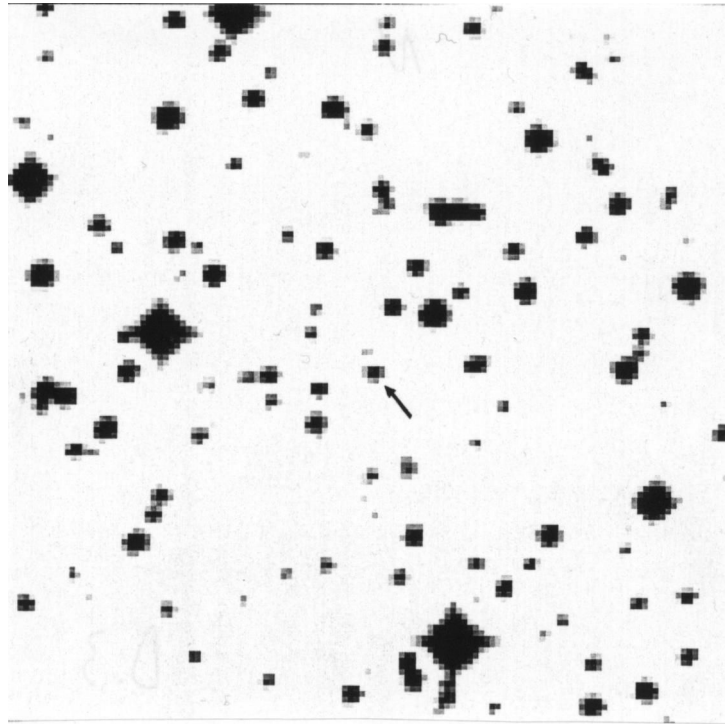


Fig. D.3. Field of V616 Mon. The object is indicated by the arrow.

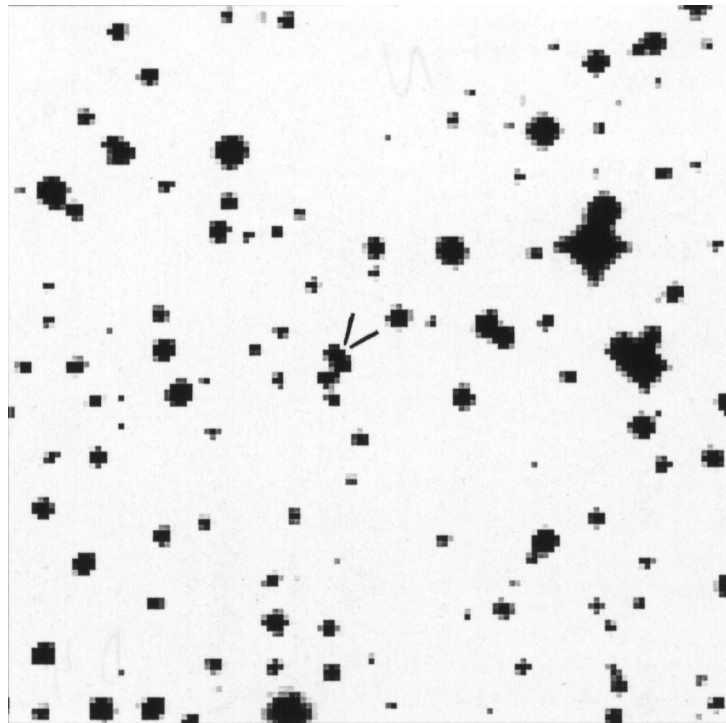


Fig. D.4. Field of MM Vel. The object, inside the group of stars at the center of the image, is indicated by the dashes. See also Fig. 5.2.

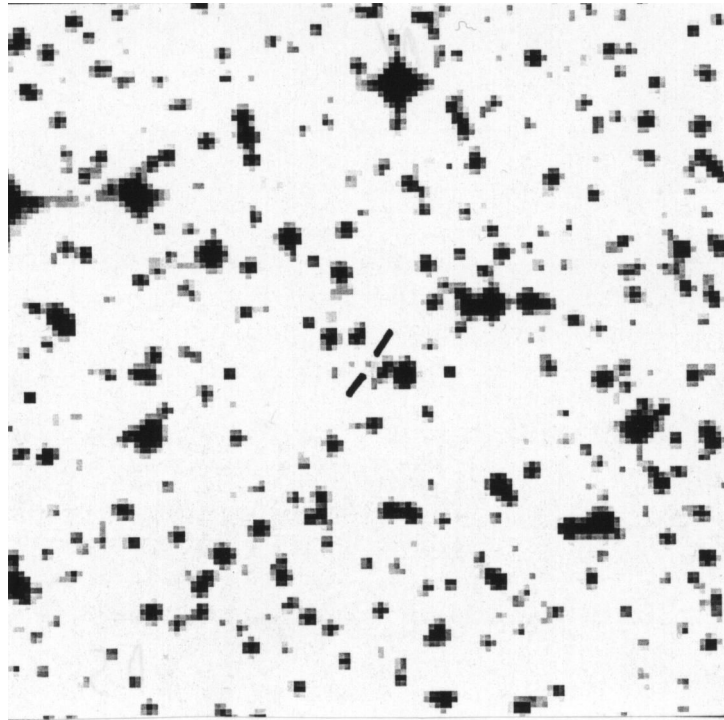


Fig. D.5. Field of GU Mus. The object is indicated by the dashes.

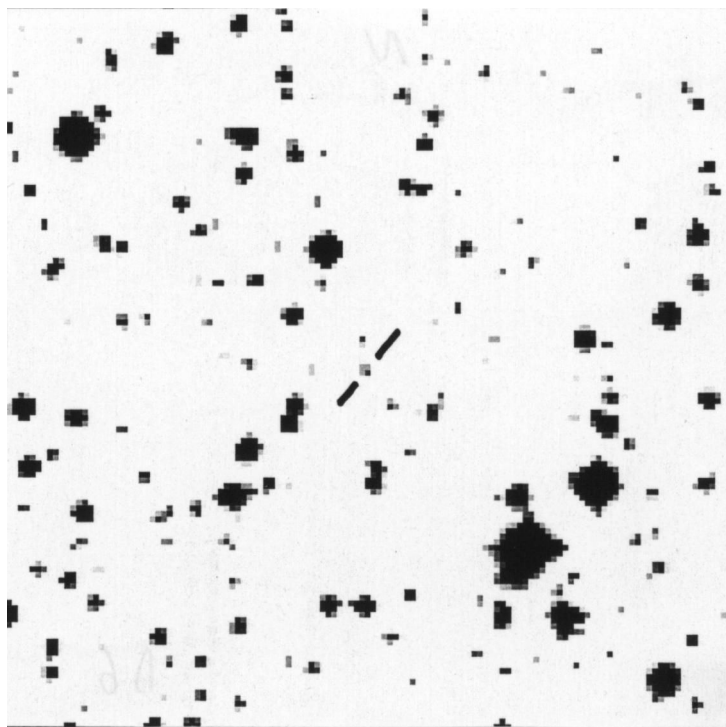


Fig. D.6. Field of BW Cir. The object is indicated by the dashes.

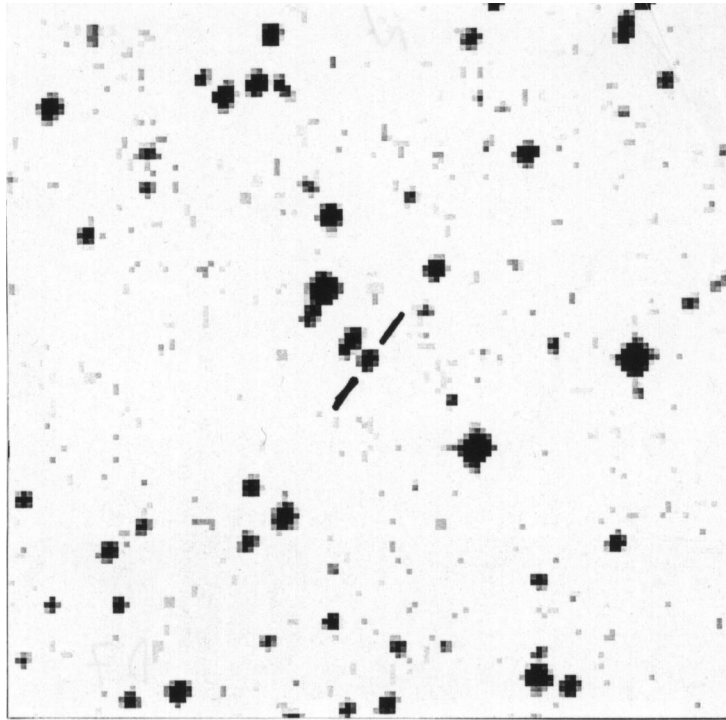


Fig. D.7. Field of V822 Cen. The object is indicated by the dashes.

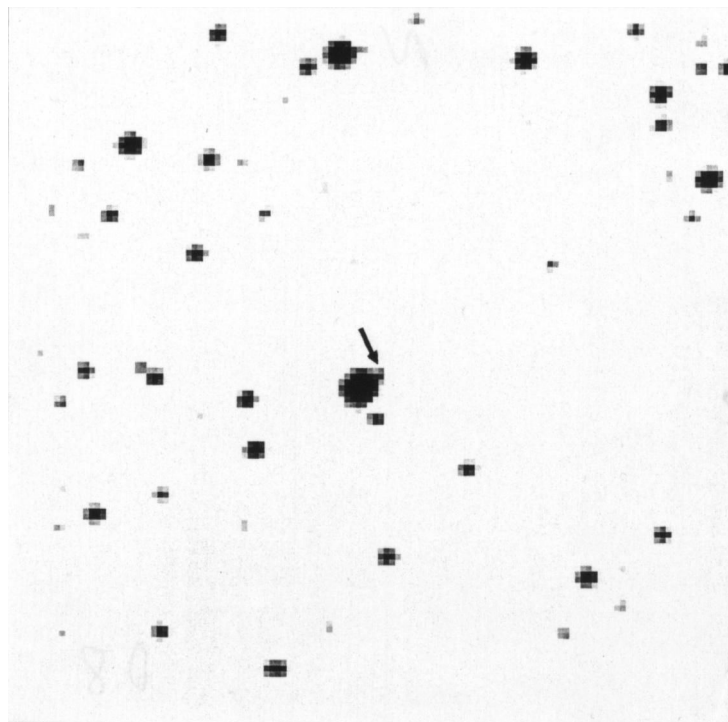


Fig. D.8. Field of IL Lup The object, prospectively superimposed to the big star at the center of the field, is indicated by the arrow.

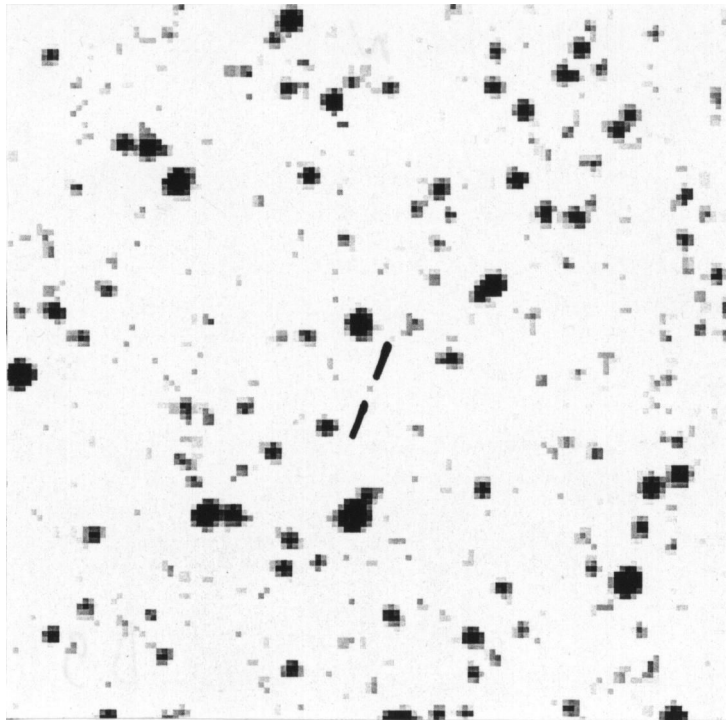


Fig. D.9. Field of KY TrA. The object is indicated by the dashes.

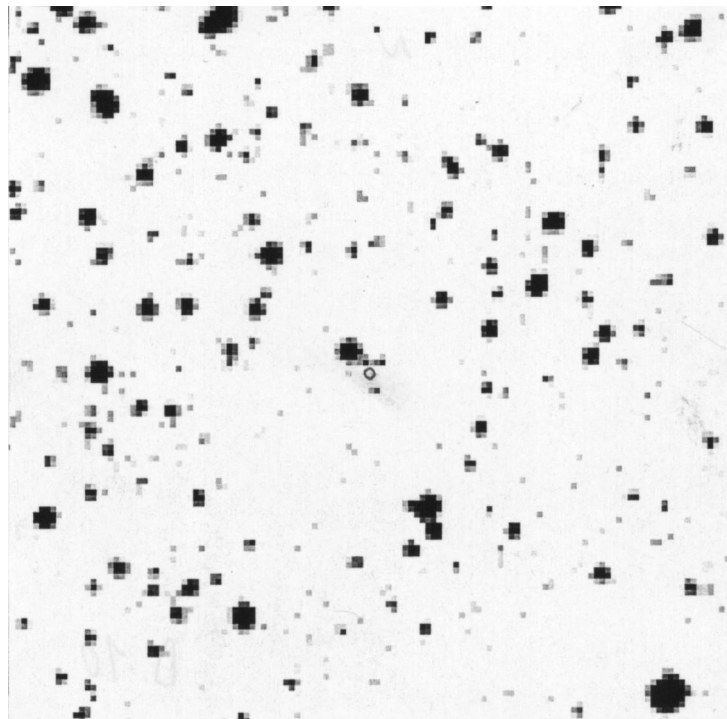


Fig. D.10. Field of QX Nor. The object, not visible here, is located inside the small circle at the center of the field.

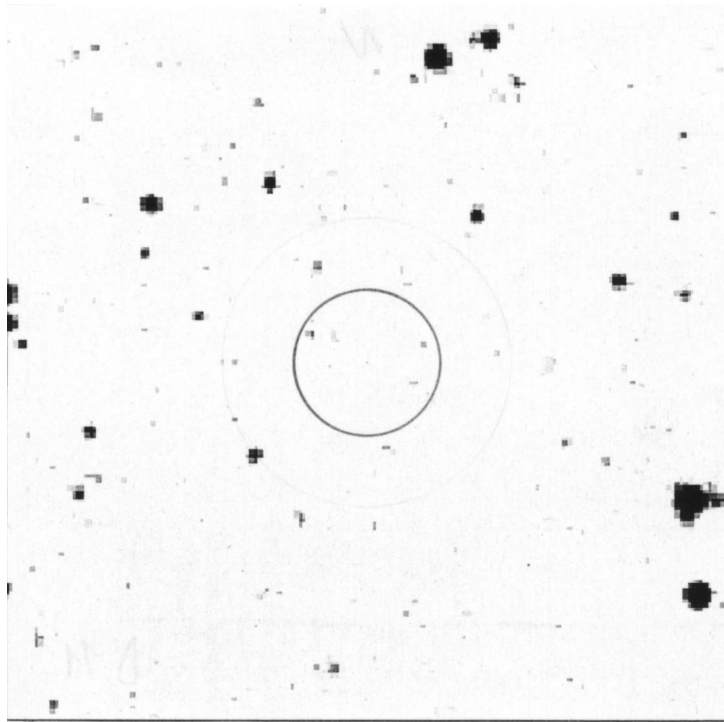


Fig. D.11. Field of Nor X-1.

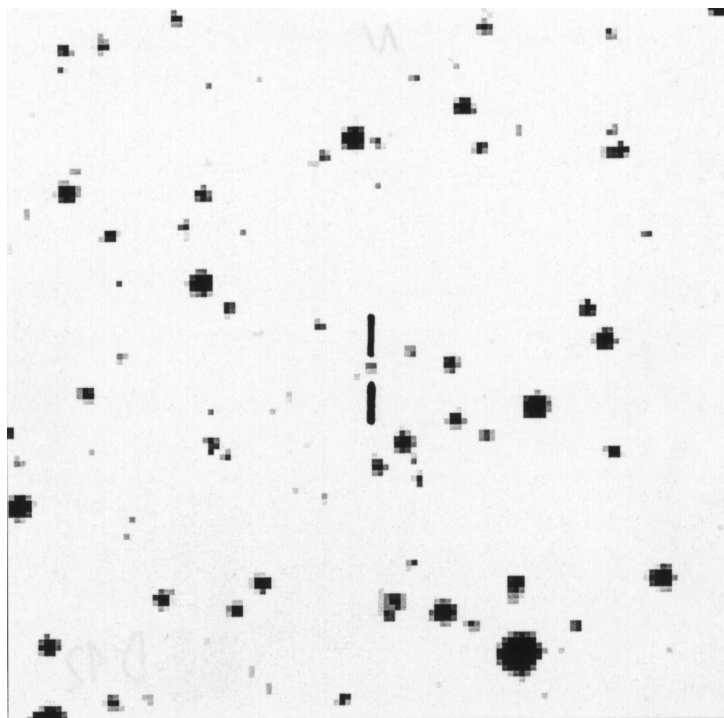


Fig. D.12. Field of XN Sco 1994. The object is indicated by the dashes.

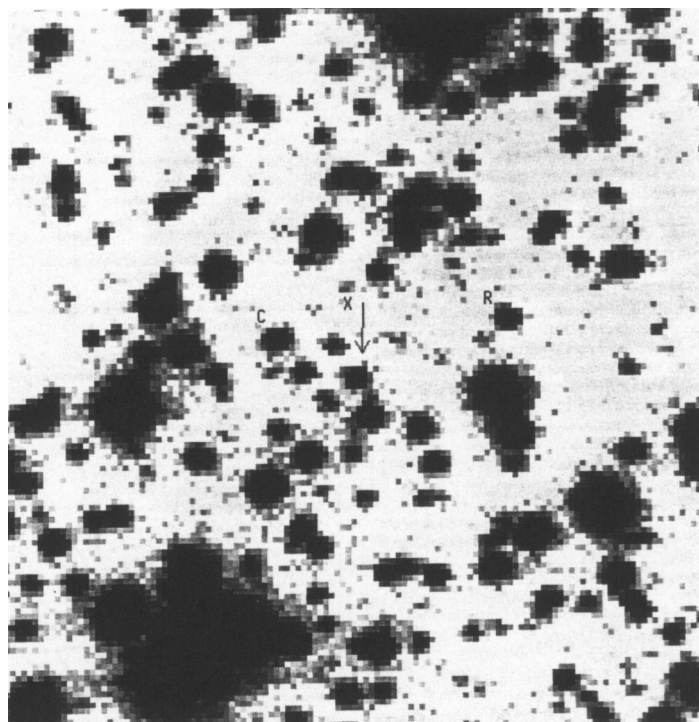


Fig. D.13. Field of V2107 Oph imaged in the Gunn *r* band (from: Martin et al. 1995). The object is indicated by the arrow and the 'X' letter. The field size is $1'.2 \times 1'.2$.

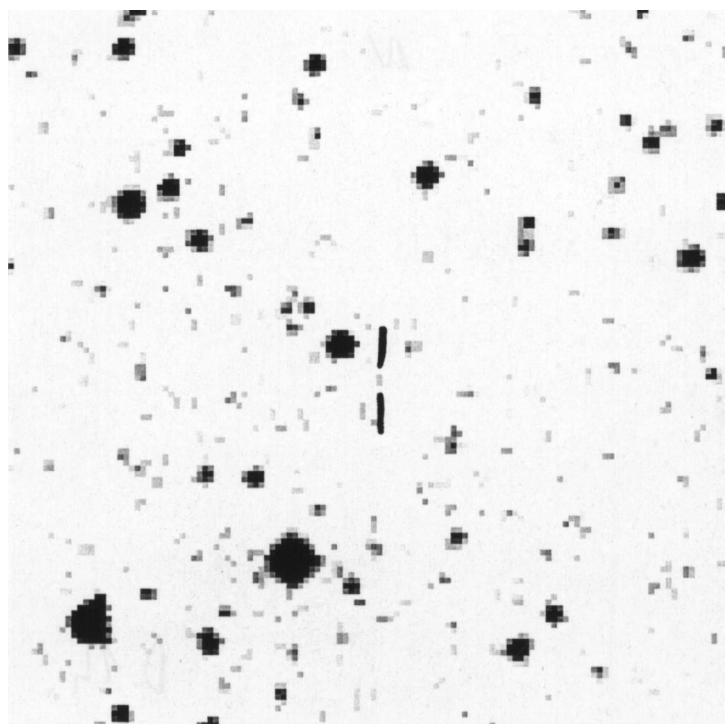


Fig. D.14. Field of V2293 Oph. The object is indicated by the dashes. See also Fig. 4.1.

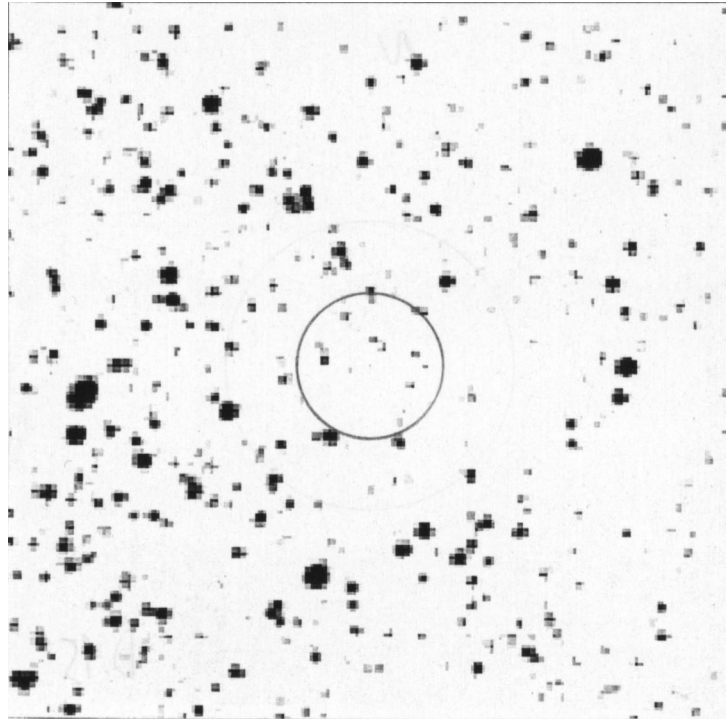


Fig. D.15. Field of KS 1730-312.

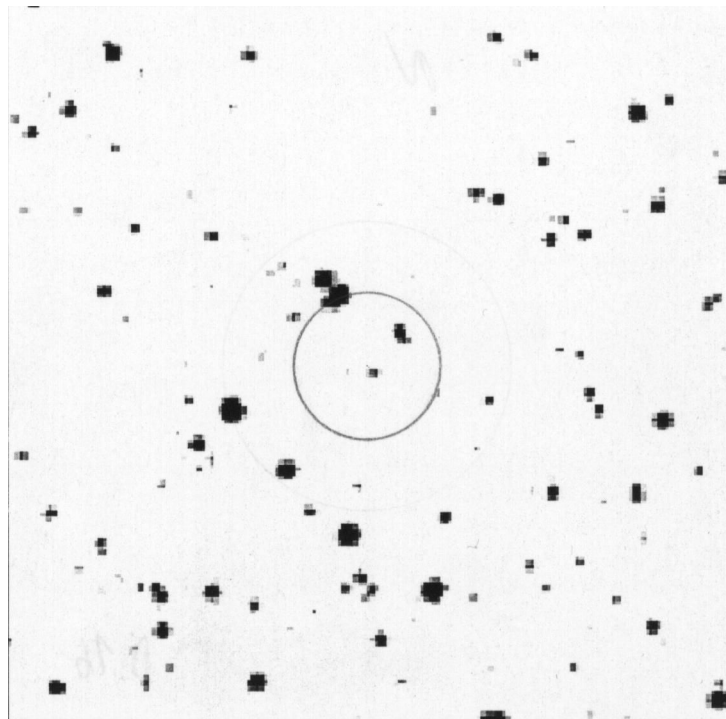


Fig. D.16. Field of 4U 1730-22.

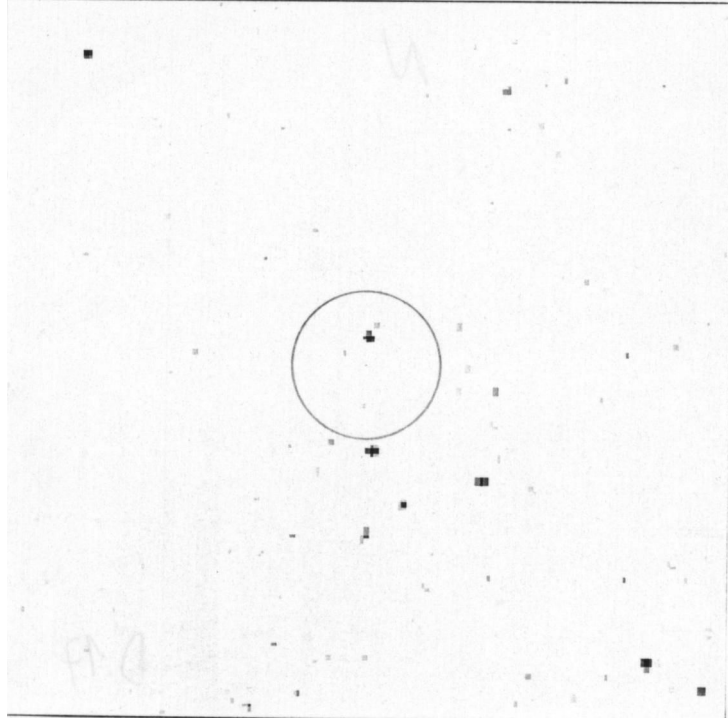


Fig. D.17. Field of KS 1731-260.

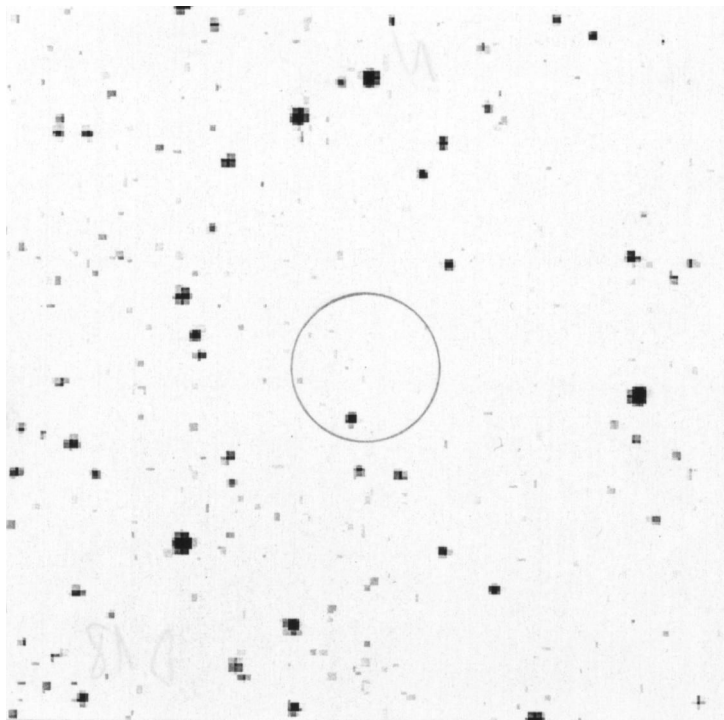


Fig. D.18. Field of 3U 1735-28.

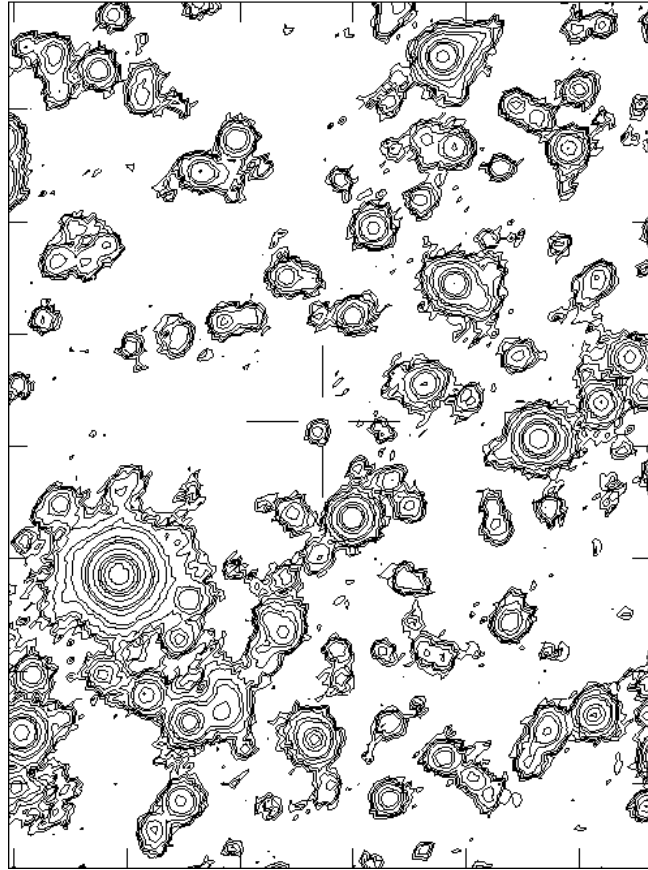


Fig. D.19. Contour plot of the field of GRS 1379-278 as imaged in the Johnson *R* band (from: Marti et al. 1997). The object is indicated by the dashes. The field size is 60"×44".

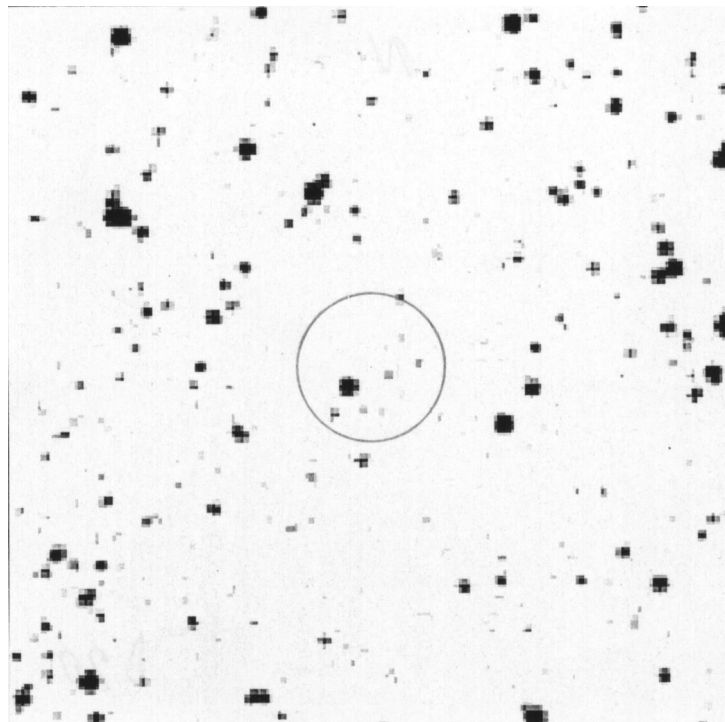


Fig. D.20. Field of 1H 1741-322.

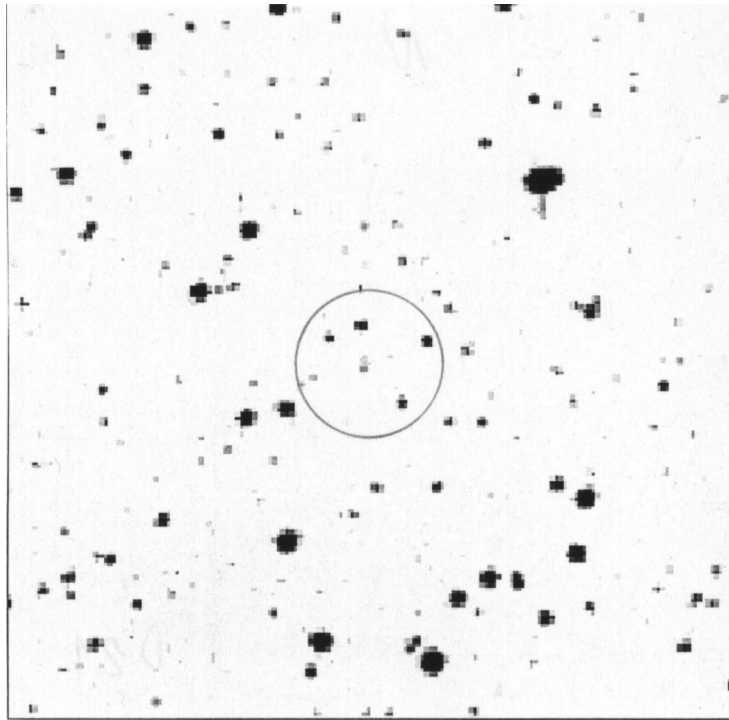


Fig. D.21. Field of A1742-289.

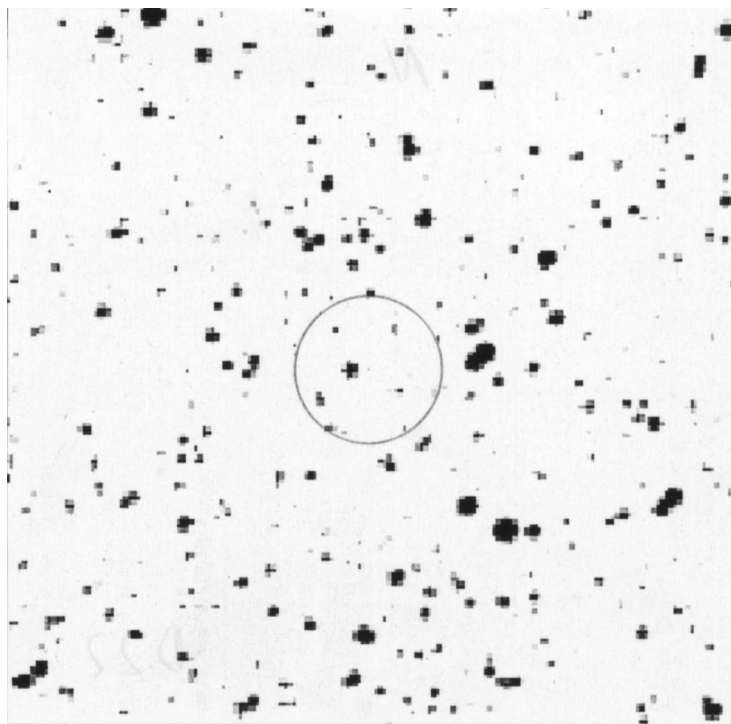


Fig. D.22. Field of A1744-361.

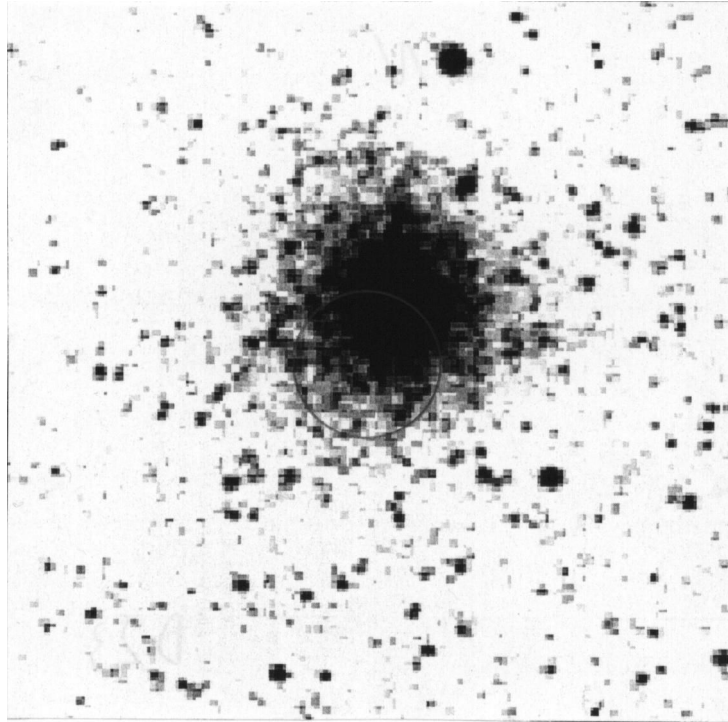


Fig. D.23. Field of MX 1746-20.

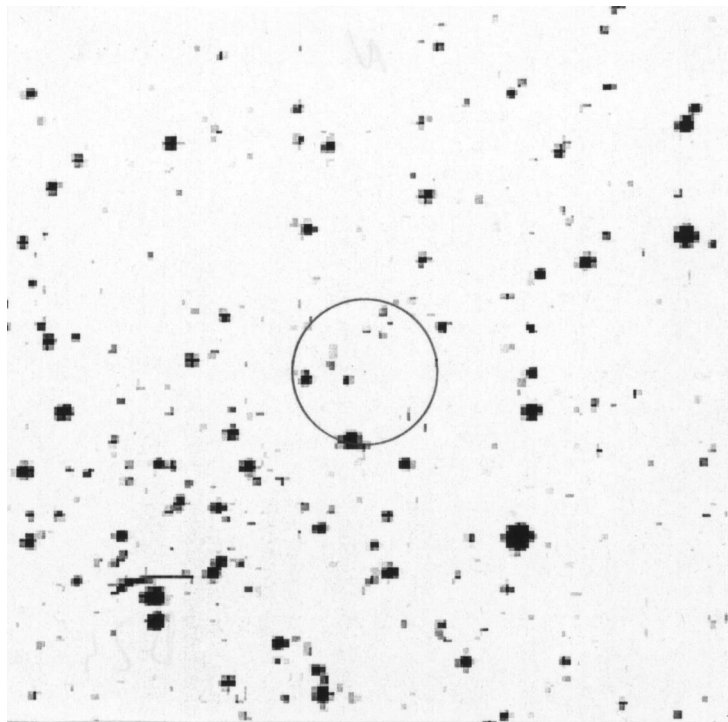


Fig. D.24. Field of 2S 1803-245.

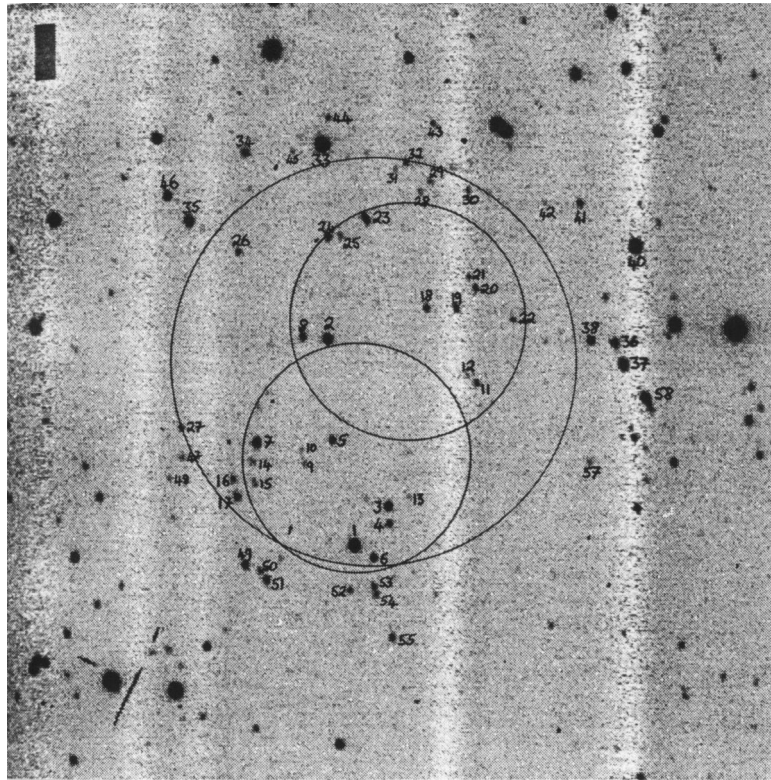


Fig. D.25. Field of EXO 1846-031 acquired with an exposure time of 600 s in the Johnson *I* band. The field size is about $3' \times 3'$ and the limiting magnitude is $I \sim 22$. The circles represent the error boxes of some X-ray satellites (from: Parmar et al. 1993).

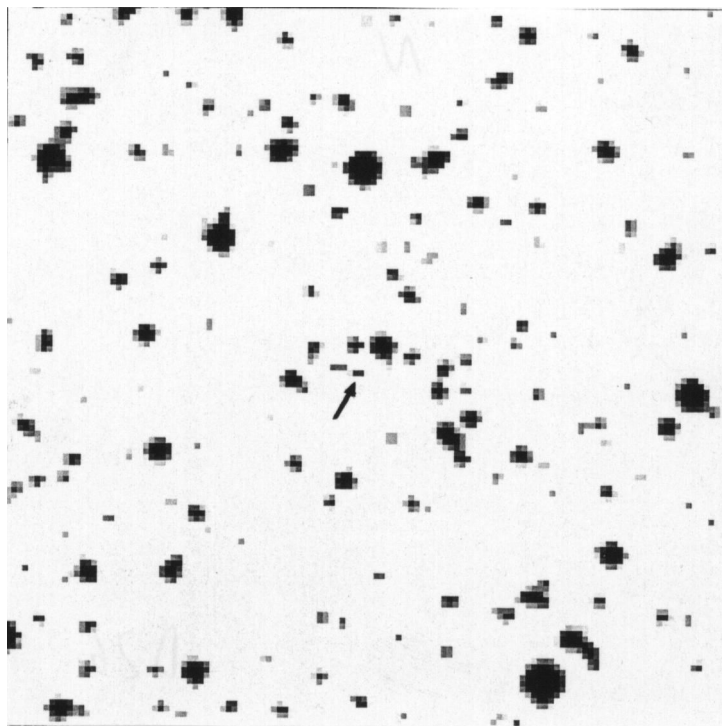


Fig. D.26. Field of V1333 Aql. The object is indicated by the dashes.

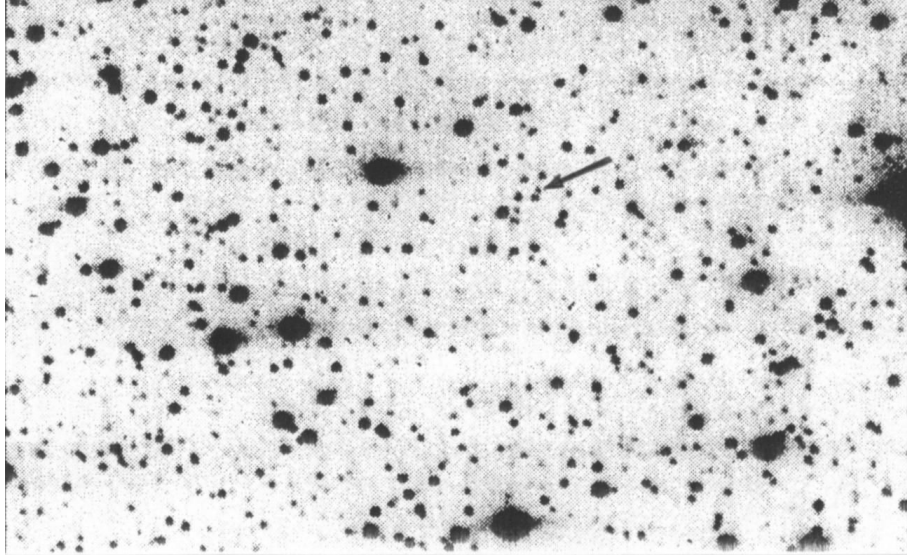


Fig. D.27. Field of QZ Vul imaged in the Cousins *I* band (exposure time: 20 minutes) with the 150 cm. “G.D. Cassini” telescope located in Loiano, Italy. The object is indicated by the arrow; the field size is about $4'.5 \times 2'.5$.

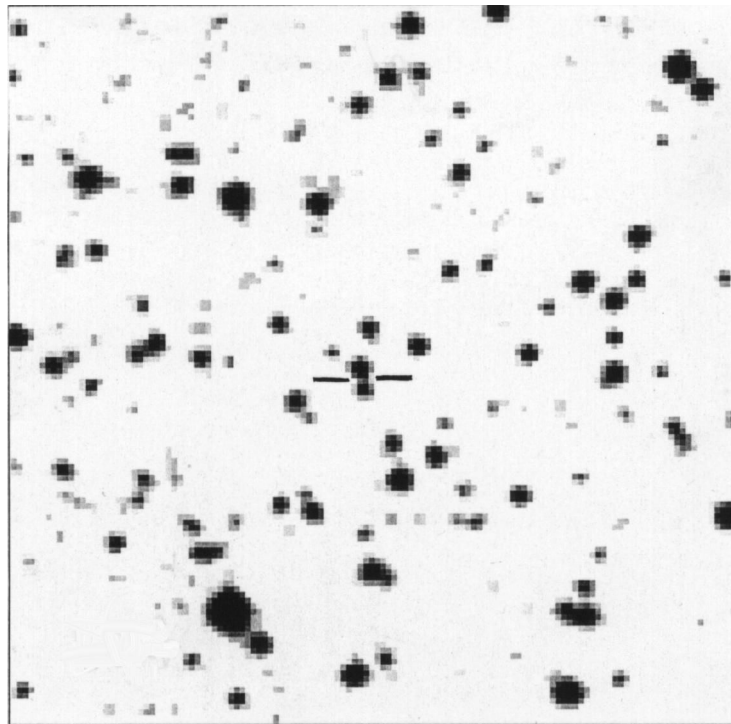


Fig. D.28. Field of V404 Cyg. The object, located between the two stars in the centre of the field, is indicated by the dashes.